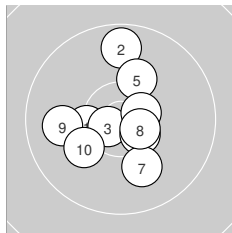
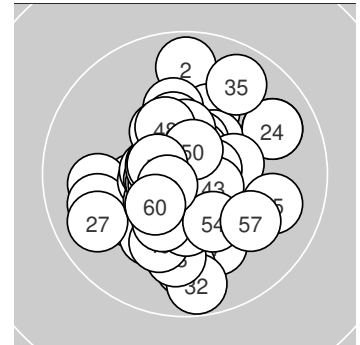
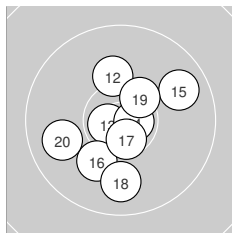


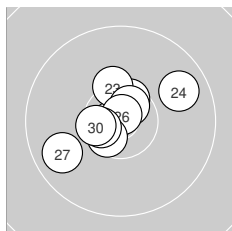
Ergebnis: **622.9** (590)
 Serien: 102.7 103.1 104.3 103.0 105.3 104.5
 Zähler: 50 10 0 0 0 0 0 0 0
 Innenzehner: 42
 Weitestе: 1021 (32.), 990 (2.), 955 (35.)
 beste Teiler: 91.4 (26.), 106.4 (21.), 116.0 (41.)
 Trefferlage: 0.30 mm links, 0.50 mm tief
 Streuwert: 3.70, horizontal: 3.52, vertikal: 3.88



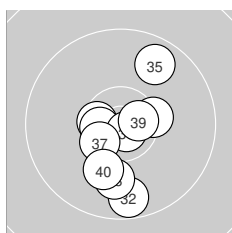
Serie 1:
 10.4 * 9.7 ↑ 10.7 * 10.5 * 10.2 ↗
 10.6 * 10.0 ↓ 10.6 * 9.9 ← 10.1 ↙
 beste Teiler: 202.5 (3.), 298.8 (6.), 301.4 (8.)
 Trefferlage: 0.60 mm links, 0.03 mm tief
 Streuwert: 4.39, horizontal: 4.07, vertikal: 4.69



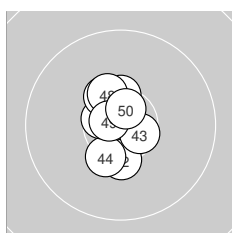
Serie 2:
 10.8 * 10.2 ↑ 10.7 * 10.7 * 9.8 ↗
 10.1 ↘ 10.6 * 9.9 ↓ 10.4 * 9.9 ←
 beste Teiler: 133.7 (11.), 185.6 (14.), 186.0 (13.)
 Trefferlage: 0.01 mm rechts, 0.77 mm tief
 Streuwert: 4.34, horizontal: 4.20, vertikal: 4.47



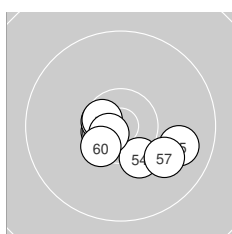
Serie 3:
 10.8 * 10.5 * 10.3 * 9.8 ↗ 10.6 *
 10.8 * 9.8 ↙ 10.6 * 10.6 * 10.5 *
 beste Teiler: 91.4 (26.), 106.4 (21.), 246.3 (25.)
 Trefferlage: 0.75 mm links, 0.71 mm hoch
 Streuwert: 3.57, horizontal: 4.13, vertikal: 2.90



Serie 4:
 10.4 * 9.7 ↓ 10.5 * 10.6 * 9.8 ↗
 10.8 * 10.5 * 10.0 ↓ 10.6 * 10.1 ↓
 beste Teiler: 131.0 (36.), 252.4 (39.), 291.4 (34.)
 Trefferlage: 0.13 mm rechts, 1.80 mm tief
 Streuwert: 4.29, horizontal: 3.07, vertikal: 5.23



Serie 5:
 10.8 * 10.4 * 10.6 * 10.3 * 10.6 *
 10.4 * 10.4 * 10.4 * 10.7 * 10.7 *
 beste Teiler: 116.0 (41.), 169.2 (49.), 237.1 (50.)
 Trefferlage: 0.63 mm links, 0.48 mm hoch
 Streuwert: 2.66, horizontal: 1.73, vertikal: 3.33



Serie 6:
 10.7 * 10.6 * 10.6 * 10.3 * 9.9 ↗
 10.6 * 10.0 ↘ 10.6 * 10.7 * 10.5 *
 beste Teiler: 193.3 (59.), 220.8 (51.), 261.9 (53.)
 Trefferlage: 0.00 mm , 1.64 mm tief
 Streuwert: 3.18, horizontal: 4.09, vertikal: 1.87

